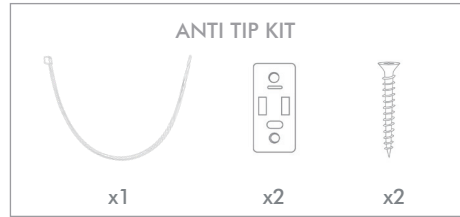
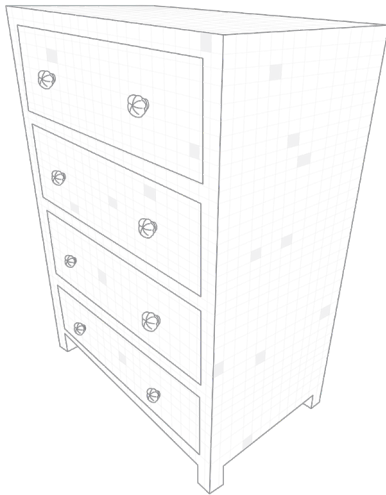
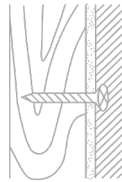


OLIVER BONAS

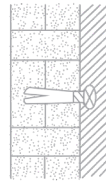
ALL BONE CHEQUERBOARD BONE CHEST OF DRAWERS



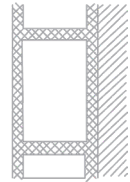
Please use the anti tip kit provided for safety. Please ensure the correct fittings are used for the chosen wall substrate:



WOOD

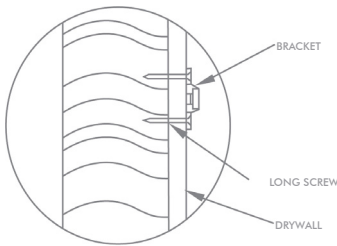


BRICK

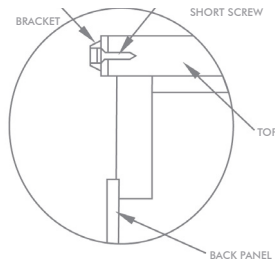


CAVITY
(Special fittings needed)

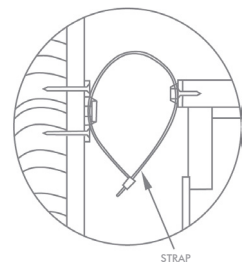
ASSEMBLY



1. Mark the location of the hole on the wall using bracket approx 1" below the top of furniture. Predrill the holes at marked location & insert wall plug. Align bracket onto wall plug & secure using long screws.



2. Move the furniture to its final position against the wall and mark the location of the wall bracket on the back of the furniture. The bracket that attaches to the furniture must go into the solid wood piece at the top, not into the thinner back panel. Move the furniture away from the wall and place a bracket on the mark. Mark and drill holes for the screws using a 3/32 drill bit. Attach the bracket to the furniture using the short screws.



3. Move the furniture to its final position and align the bracket on the furniture with the bracket on the wall. Thread the strap through the bracket as shown, and tighten until snug. Do not over-tighten.

IMPORTANT

Check that the wall bracket is firmly screwed into the stud, the furniture bracket is firmly attached to the frame, and the strap is snug.

OLIVER BONAS

CHEQUERBOARD BONE CHEST OF DRAWERS

We hope you love your purchase, however if you aren't completely happy, please retain your packaging to ensure its safe return

Each piece has been individually handcrafted by artisans in
Jodhpur to create a unique piece of furniture
Variations may occur

BONE

The chequerboard bone in this product has been handcrafted by highly skilled craftspeople in India, using traditional techniques

The unique art of bone inlay comes exclusively from the Indian state of Rajasthan. The bone is a byproduct and helps ensure that no part of the animal is wasted. The bone inlay in our products comes from buffalo and no animals are slaughtered for this process. Ethical practices are followed when gathering remains of animals that have died naturally, or it is sourced as a byproduct from other industries

MERANTI WOOD

Meranti wood is a hardwood timber and harvested from South Asia
Meranti wood is coarse in texture

MDF

The MDF has been used for the backing panel and drawer bases

CARING FOR YOUR FURNITURE

To help maintain the natural beauty and performance of your piece of furniture do not position in front of radiators, avoid direct heat, direct sunlight, moist environments and outdoor use

Any spills should be removed immediately, never let them dry out on the surface
Always use a coaster or mat to protect the surface

Take care when moving the furniture, do not drag furniture
as it may cause damage to the joints
Max load on top of unit 30kg, max load per drawers 8kg
Take care not to overload and ensure weight is evenly distributed

Wipe with a damp cloth followed by a soft dry cloth
Do not use abrasive cleaners or furniture polish on the bone as this may cause discolouration
Avoid sudden impacts as this may damage the bone

Not suitable for outdoor use
Not suitable for children's rooms
Do not sit or stand on the furniture
Designed for domestic use only

Please retain this information for future reference